



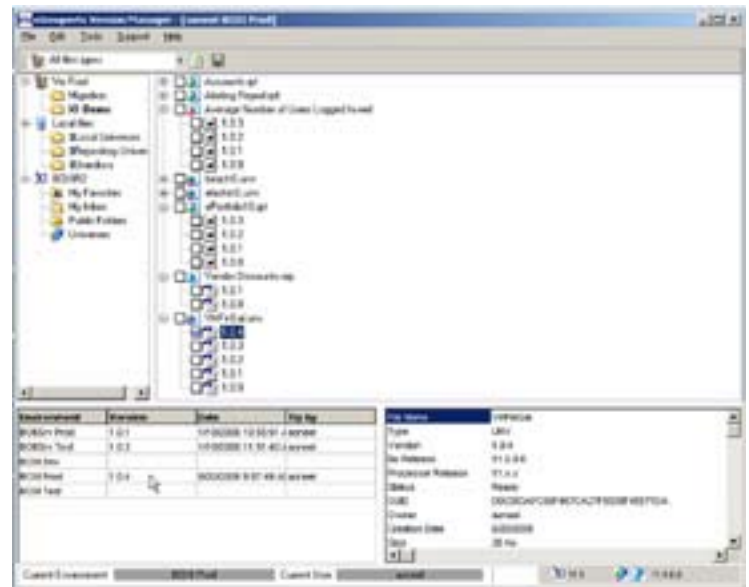
The Version Control Solution for your BusinessObjects Environment

Version Manager (VM) is a comprehensive, yet simple-to-use, version control tool for BusinessObjects. Multiple versions of Universes and Reports can be managed, compared, and securely controlled, providing complete integrity of your BusinessObjects environment.

Version Manager is designed for BusinessObjects, Web Intelligence, and Crystal, but open to use for other files also. All information is stored in the Version Manager Repository, and there is no impact or overhead to any part of your BusinessObjects environment.

Version Manager features include:

- ▲ Easy recovery of previous versions of Reports and Universes
- ▲ Simple check-in and check-out functions
- ▲ Transfer history and audit trail of actions performed
- ▲ Compare versions to view differences - both structure and content
- ▲ Definition of Packages (sets of Reports or Universes)
- ▲ Use by both Administrators or users who want to have local version management control of their own reports
- ▲ Web Services based architecture
- ▲ Low entry cost for immediate return on investment
- ▲ Compatible with BusinessObjects V5, V6, XI R1/R2, Web Intelligence V6 and XI R1/R2, Crystal Reports XI R1/R2
- ▲ View extended details of universes and reports
- ▲ Impact Analysis Reporting
- ▲ Simplified Report Validation for Migrations to XI R2



Version Manager Control Center



Versions can be checked in specified version number and relevant comments.

Version Manager (VM) for BusinessObjects An Open and Comprehensive Version Control Solution

Version Manager provides simple visual color coding to indicate differences when comparing two versions of a universe or document.

RED

Indicates the object has been removed.

It was present in Version 1, but not in Version 2.

GREEN

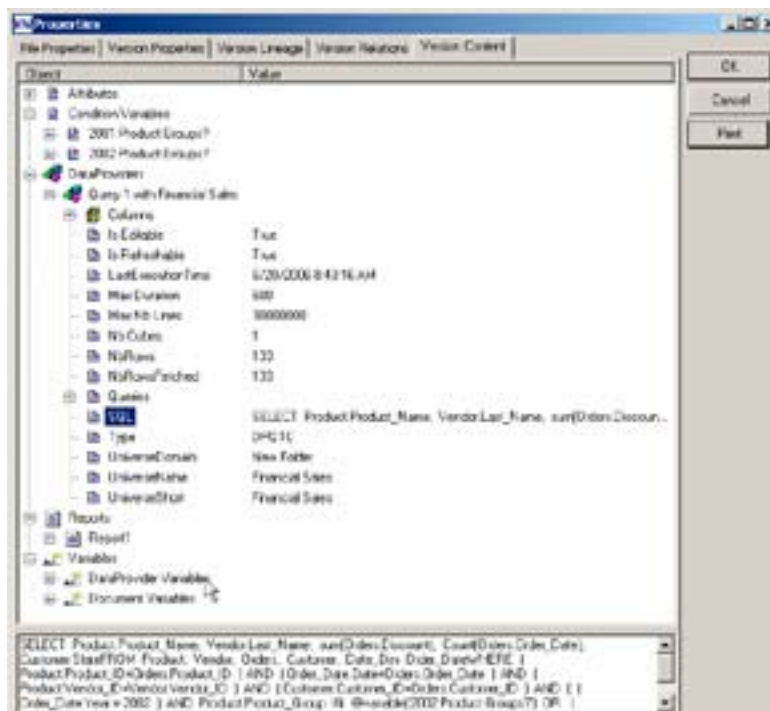
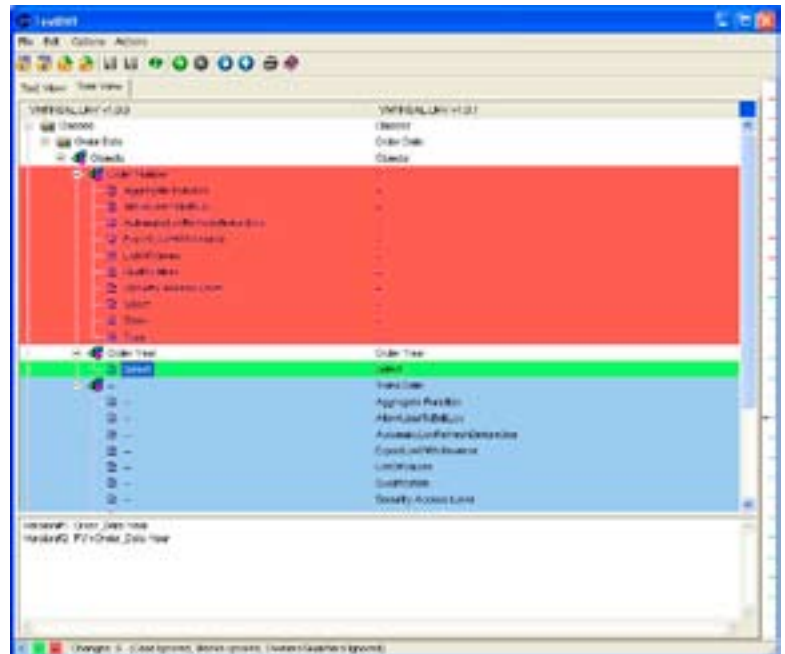
Indicates which objects have changed between versions.

In this example, the SELECT part of object Sales has changed.

BLUE

Indicates the object has been added.

It is present in Version 2, but not in Version 1.



Properties of universes and documents can be viewed for both structure and content.